

PIER SIXTY-SIX  
RESIDENCES

RESORT  
RESIDENCES

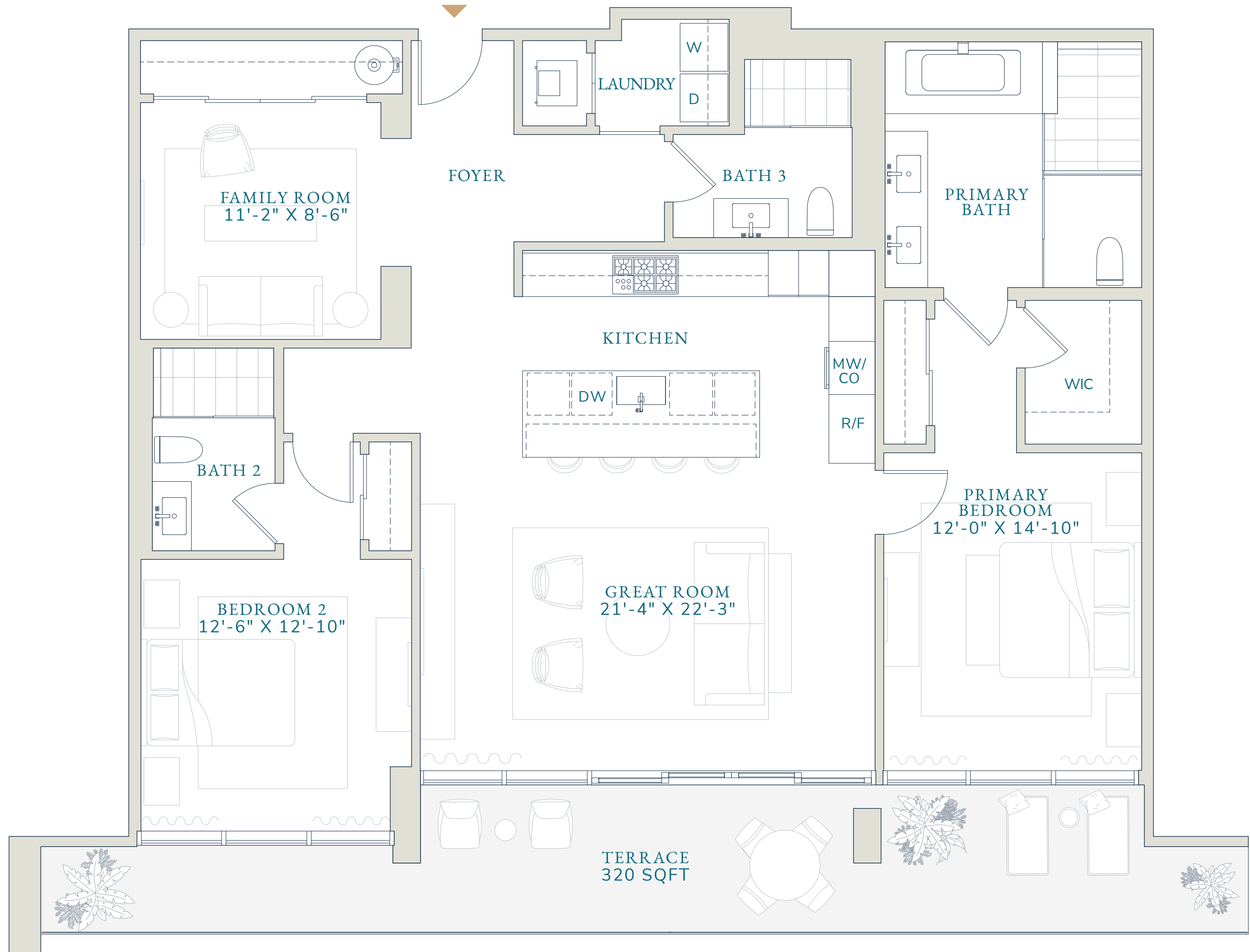
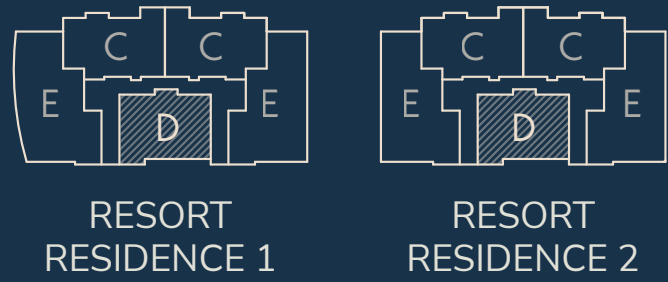
D

2 BEDROOMS  
3 BATHROOMS

Interior  
1,738 SQFT  
161.5 SM

Terrace  
320 SQFT  
29.7 SM

Total  
2,058 SQFT  
191.2 SM



Sales Gallery  
754.231.3066

EXCLUSIVE SALES & MARKETING BY  
ONE Sotheby's  
INTERNATIONAL REALTY



Stated dimensions are measured to the exterior boundaries of the exterior walls and the centerline of interior demising walls (without deductions for interior columns, shear walls or shafts) and in fact vary from the dimensions that would be determined by using the description and definition of the "Unit" set forth in the Declaration (which generally only includes the interior airspace between the perimeter walls and excludes interior structural components, shear walls and shafts). For the calculation of the unit area following the definition of the unit set forth in the Declaration, see Exhibit "3" of the Declaration. Additionally, measurements of rooms set forth on any floor plan are generally taken at the greatest points of each given room (as if the room were a perfect rectangle), without regard for any cutouts. Accordingly, the area of the actual room will typically be smaller than the product obtained by multiplying the stated length times width. All dimensions are approximate, and all floor plans and development plans are subject to change. Designed by Signature Creative.